

McHale



Presented by: James Heaneu
Presented to: ITLUS 2012



Presentation Overview

- Company Development
- Product Development
- Latest Products



Overview



- Family Business
- 270 Employees
- Baling & Wrapping
- 45 Countries



McHale Product Range

Round Bale Wrappers



Square Bale Wrappers



Handling Equipment



Baler Range



Profile of McHale



- **Mid 70's** **Retail Machinery Outlet Est.**
- Late 70's Manufacturing Commenced
- Late 80's First Bale Wrapper
- 1990's Export Markets
- Mid 90's Wrapper Development
- 1999 Purpose built facility built
- 2002 First Fusion launched on the Market
- 2004 Purchase of 2nd Production Facility
- 2005 F550 Baler launched
- 2007 F560 & F540 Balers Launched
- Today Machines are sold in 44 Countries
- 2009 V660 Variable Chamber Baler / 991T

M-Hale Farm Machinery



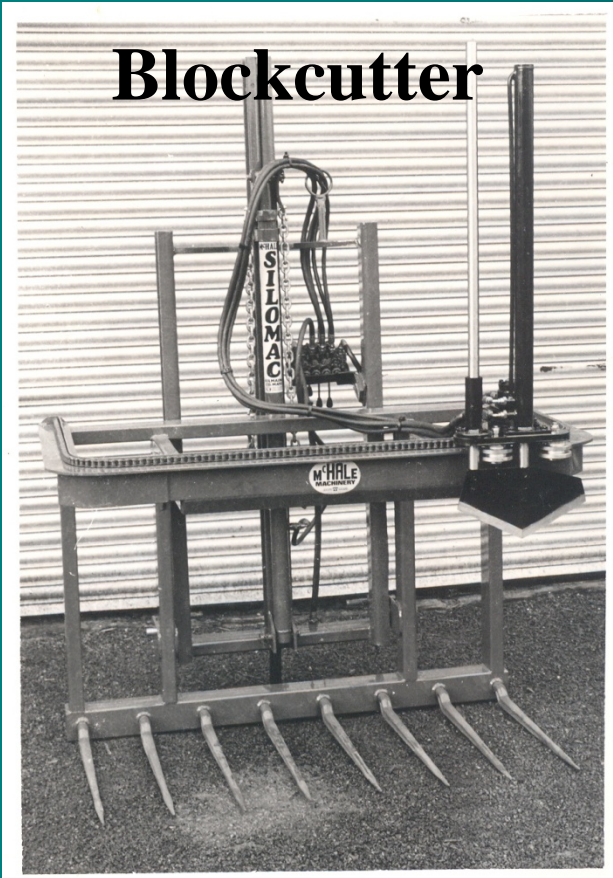
History of McHale



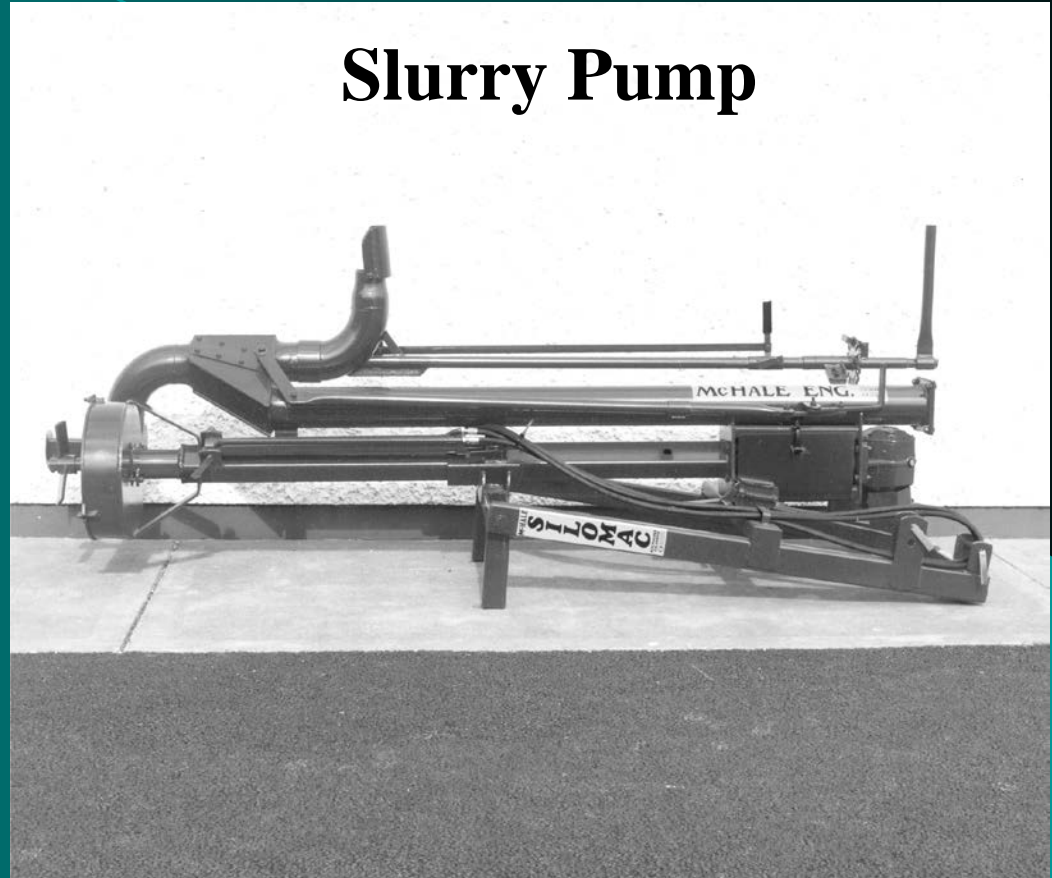
- Mid 70's Retail Machinery Outlet Est.
- **Late 70's** **Manufacturing Commenced**
- Late 80's First Bale Wrapper
- 1990's Export Markets
- Mid 90's Wrapper Development
- 1999 Purpose built facility built
- 2002 First Fusion launched on the Market
- 2004 Purchase of 2nd Production Facility
- 2005 F550 Baler launched
- 2007 F560 & F540 Balers Launched
- Today Machines are sold in 44 Countries
- 2009 V660 Variable Chamber Baler / 991T

First Products - Late 70's

Blockcutter



Slurry Pump



- Winter Products -
Search for a Summer Product ?

History of McHale



- Mid 70's Retail Machinery Outlet Est.
- Late 70's Manufacturing Commenced
- **Late 80's** **First Bale Wrapper**
- 1990's Export Markets
- Mid 90's Wrapper Development
- 1999 Purpose built facility built
- 2002 First Fusion launched on the Market
- 2004 Purchase of 2nd Production Facility
- 2005 F550 Baler launched
- 2007 F560 & F540 Balers Launched
- Today Machines are sold in 44 Countries
- 2009 V660 Variable Chamber Baler / 991T

Late 80's – Bale Wrappers



Decision to Specialise – The Key
Also – People, Investment, R&D Focus

McHale Wrapper Development

1988



1998



1991



1998



1995



2000



991 B Series of Machines

- Round Bale Wrappers -



B
C



B
J
S



B
E



McHale Ireland



McHale Ireland

- Purpose Built Facility (1999)
- 12 Hectare Site
- 4 Key Areas
- Quality - Reporting
- Design Department
- Manufacturing at the moment
- Product Shipment



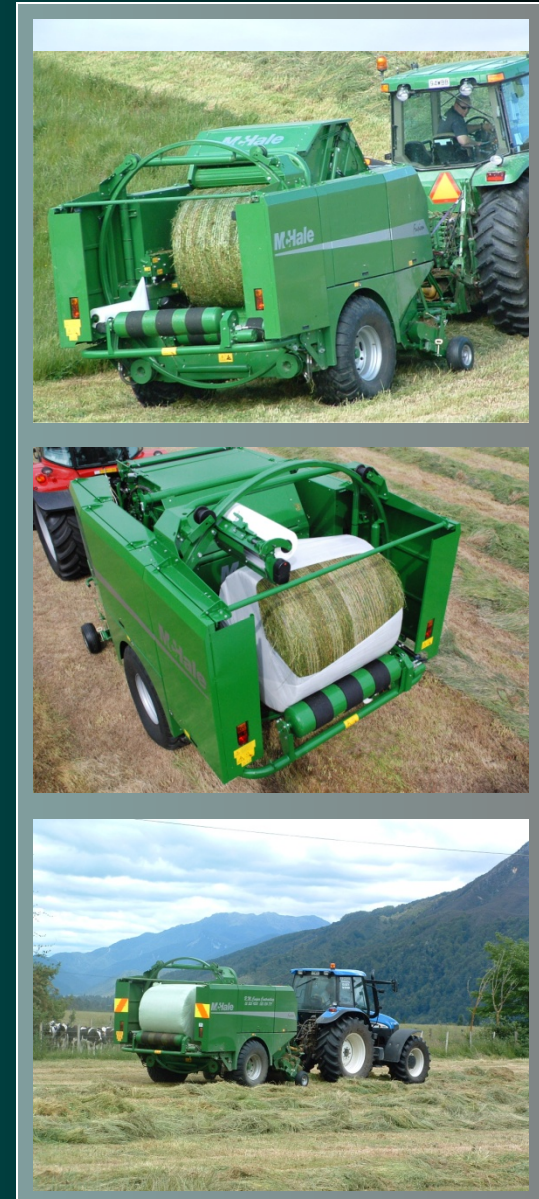
2002 – Entry into the Baler Market

WHY?



Fusion

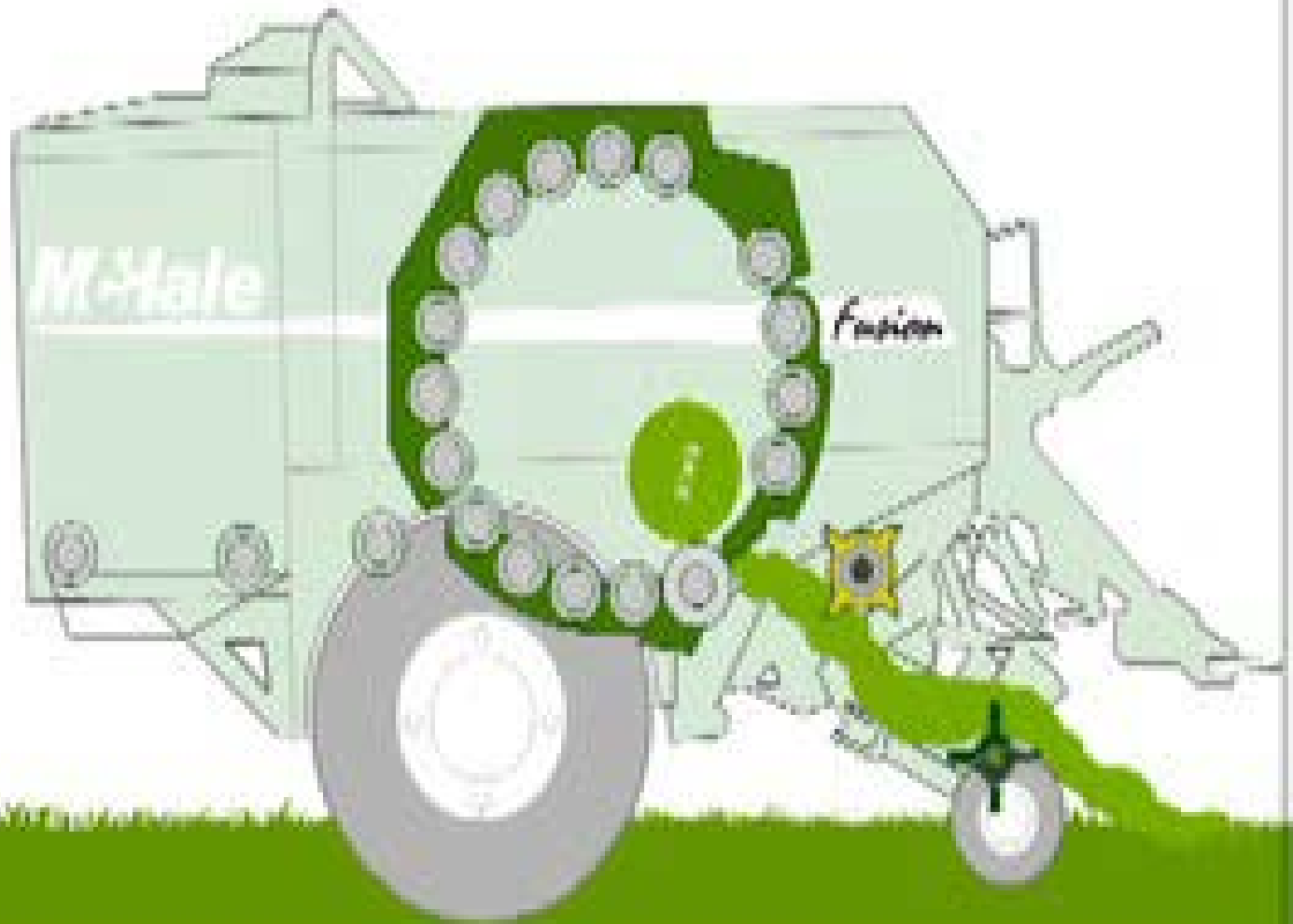
- Purpose Built – Integrated Machine
- Fixed Chamber Baler
 - (1.23 X 1.25m bale)
- Integrated Vertical Wrapping Ring
- Unique “one pass” Bale Transfer



Patented Bale Transfer

Baling

Fusion



McHale Hungary

- Conducted work for McHale since 2002
- Purchased in October 2004
- Manufactures
 - F5 Balers
 - R5 Bale Handlers
 - Pick Ups & Chopper Units
- Located 120 Km East of Budapest



Baler Manufacture



Baler Manufacture & Testing



History of McHale



- Mid 70's Retail Machinery Outlet Est.
- Late 70's Manufacturing Commenced
- Late 80's First Bale Wrapper
- 1990's Export Markets
- Mid 90's Wrapper Development
- 1999 Purpose built facility built
- 2002 First Fusion launched on the Market
- 2004 Purchase of 2nd Production Facility
- **2005 F550 Baler Launched**
- **2007 F560 & F540 Balers Launched**
- Today Machines are sold in 44 Countries
- 2009 V660 Variable Chamber Baler / 991 HS
- 2011 F5000 Baler Range & W2020 Wrapper

McHale Product Development

2002



Fusion

2005



F550 Baler

2007



Fusion 2

2007



R5 Bale Handler

2007



F560 & F540 Balers

2009



V660 & 991 High Speed

V660 Variable Chamber Baler



Will open up new Markets

www.mchale.net

2010 - McHale 991 High Speed 50% More output than a 991BE



Agritechnica 2011 – Official Launch

F5000 Baler Range



F5000 Balers— 3 New Models



Over 90% of the components are the same



F5400 - Non Chopper Baler



F5500 - 15 Knife Chopper

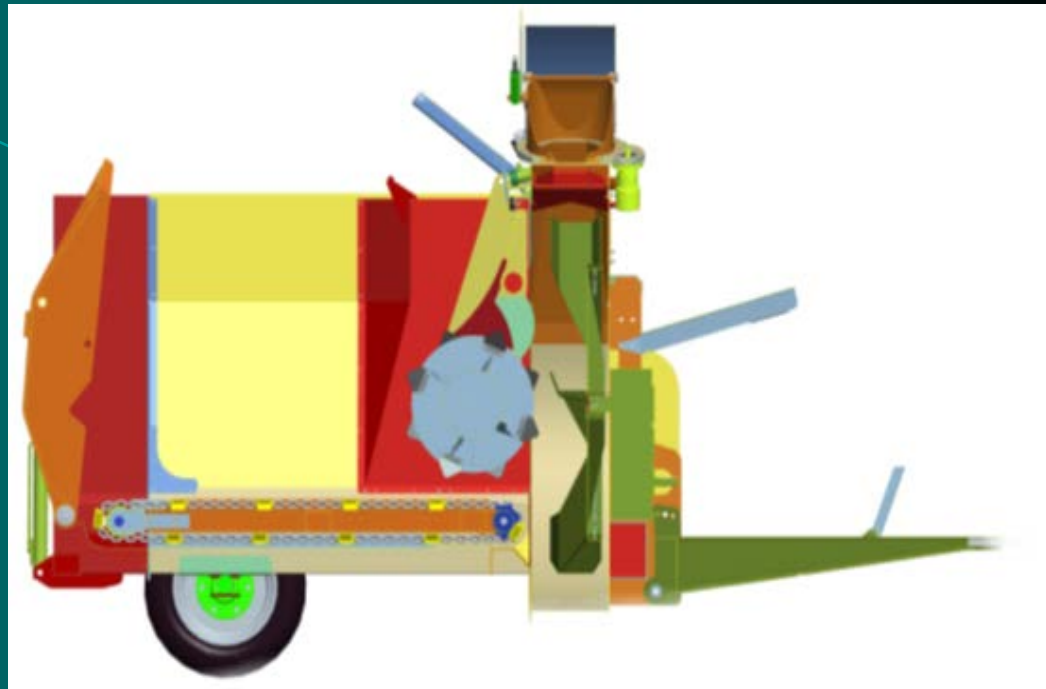


F5600 - 23 Knife Chopper



2011 – C460 Straw blower and bale feeder

- Hydraulically driven floor chain with 10 Slats.
- 11mm high tensile chain.
- Consistent and even feed to rotor.
- Adjustable rotation speed via dial on control box.
- Loose material can be removed by reversing conveyor.



- Control console allows the operator to adjust;

1. The conveyor speed and director.
2. The tailgate position.
3. The chute position and height.
4. The rotor comb movement for unblocking.
5. Rotor activation & deactivation.

- The direction and height of the feeding chute can be controlled via an integrated joystick on the control console in the tractor cab.



- Three stage chute.
- Joystick controlled chute for easy chute height & direction adjustment.
- Deep wide chute reduces risk of blockages.
- 300° chute rotation.
- Straw can be blown 18m on right and 13m to the left.



- 48 Blades mounted on 6 discs.
- Belt Driven rotor independent of flywheel (reduces the amount of power required to start the machine).



2012 - W2020 Wrapper



Cut and hold to one point



Official Launch, September 2012



Unique Features

Patented bale transfer

Vertical wrapping ring



McHale - The Professional Choice



Thank you for your time
www.mchale.net